



Summarized Installation

Transaction Auditing/Activity Monitor (Listener)
Component Install

Document containing setup
and instructions related to install

WebSphere 8.5 and above

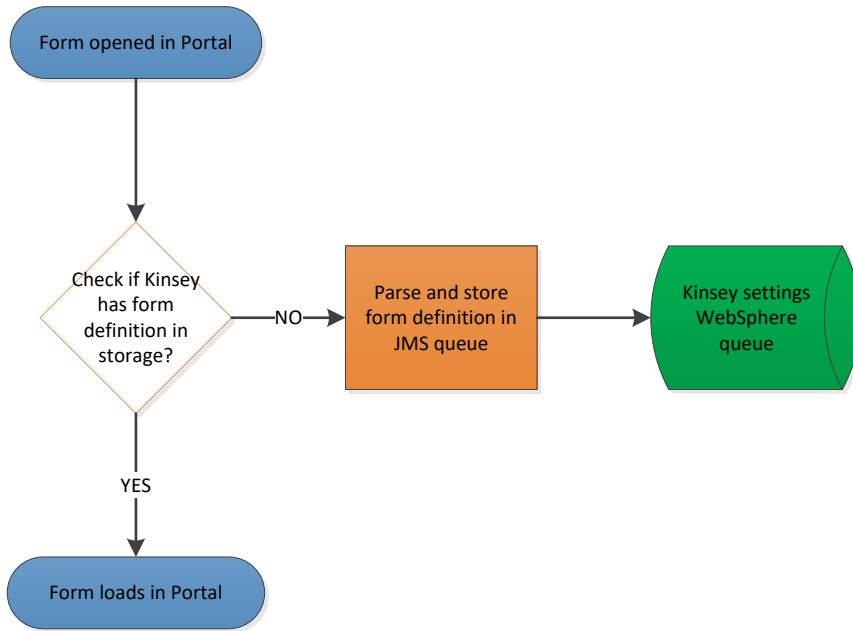
5/1/2017

Table of Contents

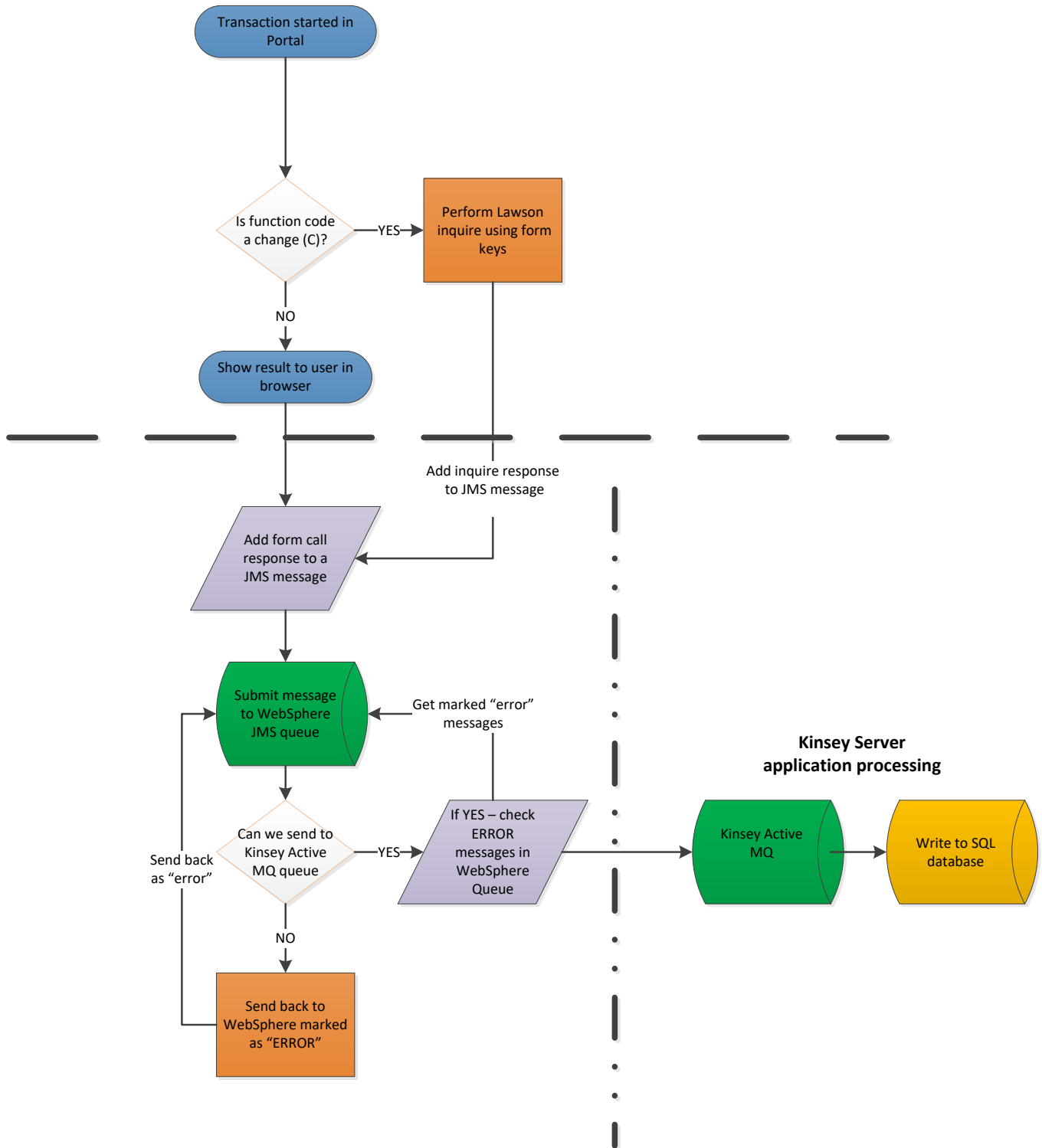
Table of Contents.....	1
Design Overview	3
Form Definition Collection	3
Transaction Processing.....	4
Installed Web Sphere Components	5
Enterprise Applications	5
Service Bus.....	5
JMS Connection Factory	5
JMS Queues	5
JMS Activation Specification	5
Shared Library	5
Kinsey WebSphere Global Configuration.....	6
URL – Using default Virtual Host	6
Configuration Screen.....	7
Activating Kinsey Transaction Auditing/Activity Monitor (Listener)	8
Deactivating the Kinsey Transaction Auditing/Activity Monitor (Listener).....	9
Contacts	10

Design Overview

Form Definition Collection



Transaction Processing



Installed Web Sphere Components

Enterprise Applications

- KKFilter
- KKFilterConfiguration

Service Bus

- KKFilterBus

JMS Connection Factory

- KKQConnectionFactory

JMS Queues

- KKQueue
- KKSettings

JMS Activation Specification

- KKJMSActivationSpec

Shared Library

- KKSharedLib

Kinsey WebSphere Global Configuration

URL – Using default Virtual Host

- [http://\[WEBSPHERE_DEPLOYMENT_MANAGER_SERVER\]:9080/KKFilterConfigurationWEB](http://[WEBSPHERE_DEPLOYMENT_MANAGER_SERVER]:9080/KKFilterConfigurationWEB)

** WEBSPHERE_DEPLOYMENT_MANAGER_SERVER is typically the WebSphere Admin Console URL*

Configuration Screen

Java Messaging Queue Messages

Settings	160
Local Transactions	0
Remote Queue	5

Application

Application	App Server	Status
BPM	server2_Node01 server1_Node01	●
DefaultApplication		●
IOS	server2_Node01 server1_Node01	●
IOS-cluster		●
KKFilter	server2_Node01 server1_Node01	●
KKFilterConfiguration	server2_Node01 server1_Node01	●
LawsonSecurity	server2_Node01 server1_Node01	●
OTIS	dmgr	●
WebSphereWSDM		●
commsvc		●
ibmasyncrsp	server2_Node01 server1_Node01	●
isclite	dmgr	●
ivtApp		●
query		●

Selectable WebSphere Scopes

[(cell):Is10serverCell01:(cluster):KKCluster]

Integration Bus

JMS Resources

Shared Library

JDBC Connections

System Settings

Log Level

Debug

Serial #

Active MQ Port

Active MQ Server

AMQ Extra Properties

Customer ID

All Stored Settings

Field mask sets 28 forms

Function code sets 21 forms

Form types 28 forms

Field sets 28 forms

Key sets 46 forms

1. Java Messaging Queue Messages
 - **Settings** - number of JMS messages in WebSphere that have settings (system and Lawson)
 - **Local Transactions** – current Lawson transactions in WebSphere waiting to be sent to Active MQ
 - **Remote Queue** – current Lawson transactions in Active MQ waiting to be processed in database
2. Enterprise Application Status
 - WebSphere application status (running or not) across the WebSphere environment
3. WebSphere Resource Status
 - **WebSphere Scope selection** – Server, Cluster, etc
 - **Integration Bus** – Add or delete the KKFilterBus
 - **JMS Resources** – Add or delete the JMS items: connection factory, queues, activation specification
 - **Shared Library** – Add or delete the KKSharedLib library
 - **JDBC Connections** – (not used at this time)
4. Kinsey System Settings
 - **Log Level** – values are (0=least verbose) to (9=most verbose)
 - **Debug** – if *TRUE*=show all log messages, regardless of Log Level
 - **Serial #** - Customer serial number (Kinsey provided)
 - **Active MQ Port** – Active MQ Port (typically 61617 – SSL encrypted port)
 - **Active MQ Server** – Active MQ Server (typically Kinsey virtual server name/ip address)
 - **AMQ Extra Properties** – extra connection properties for Active MQ URL connection
 - **Customer ID** – Customer id number (Kinsey provided)
5. Stored Settings – all forms, function codes defined

Activating Kinsey Transaction Auditing/Activity Monitor (Listener)

If you want to re-enable (or disable) in the future...the process has gotten much easier:

1. Open **WebSphere Admin Console**
2. Open **Enterprise Applications**
3. Open **IOS** application
4. Click the **Shared Library References**
5. Check **IOS.war**
6. Click **Reference shared libraries**
7. Select **KKSharedLib** (and slide it *RIGHT* to enable)
8. Hit **Ok**
9. Hit **Ok**
10. **Save configuration**

Sync nodes:

11. Open **System Administration** (back on WebSphere *main menu*)
12. Open **Save** changes to master repository
13. Check box to **Synchronize changes with nodes**
14. Click **Save**
15. **Stop IOS** application
16. **Start IOS** application

****AT THIS POINT THE LISTENER/AUDITOR WILL BE ACTIVE****

Deactivating the Kinsey Transaction Auditing/Activity Monitor (Listener)

If you want to re-enable (or disable) in the future...the process has gotten much easier:

1. Open **WebSphere Admin Console**
2. Open **Enterprise Applications**
3. Open **IOS** application
4. Click the **Shared Library References**
5. Check **IOS.war**
6. Click **Reference shared libraries**
7. Select **KKSharedLib** (and slide it *LEFT* to disable)
8. Hit **Ok**
9. **Save configuration**

Sync nodes:

10. Open **System Administration** (back on WebSphere *main menu*)
11. Open **Save** changes to master repository
12. Check box to **Synchronize changes with nodes**
13. Click **Save**
14. **Stop IOS** application
15. **Start IOS** application

****AT THIS POINT THE TRANSACTION AUDITING/ACTIVITY MONITOR (LISTENER) WILL BE DEACTIVATED****

Contacts

Dan Kinsey
President
Office: 630.858.4866
Email: d.kinsey@kinsey.com

Mike Nitka
Tech Consultant
Office: 630.858.4866
Cell: 262.705.2102
Email: m.nitka@kinsey.com

Web Address: <http://www.kinsey.com>