



## Summarized Installation

Transaction Auditing/Activity Monitor (Listener)  
Component Install

Document containing setup  
and instructions related to install

WebSphere 8.5 and above

**5/1/2022**

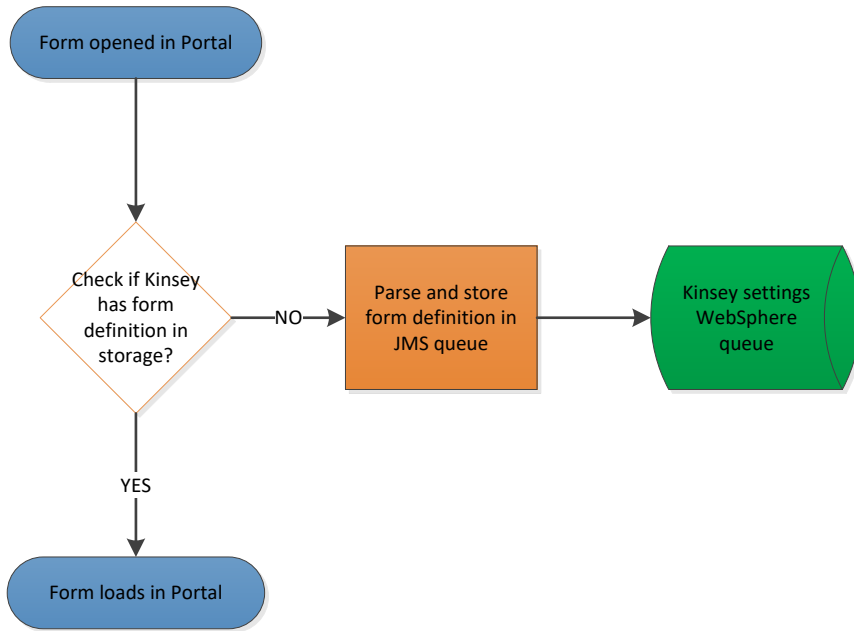
---

## Table of Contents

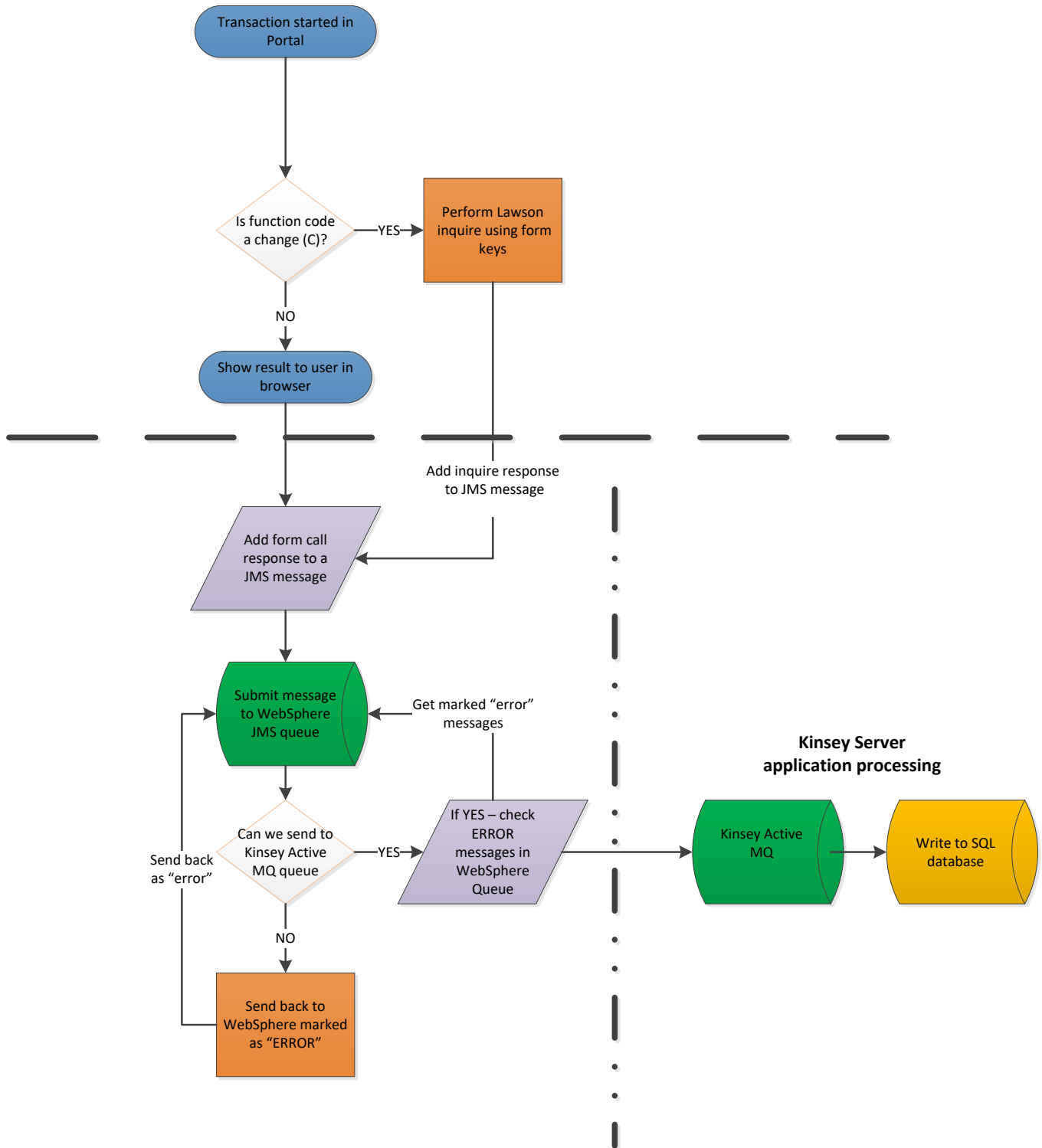
Table of Contents.....	1
Design Overview .....	3
Form Definition Collection .....	3
Transaction Processing.....	4
Installed Web Sphere Components .....	5
Enterprise Applications .....	5
Service Bus.....	5
JMS Connection Factory .....	5
JMS Queues .....	5
JMS Activation Specification .....	5
Shared Library .....	5
Kinsey WebSphere Global Configuration.....	6
URL – Using default Virtual Host .....	6
Configuration Screen.....	7
Activating Kinsey Transaction Auditing/Activity Monitor (Listener) .....	8
Deactivating the Kinsey Transaction Auditing/Activity Monitor (Listener).....	9
Contacts .....	10

## Design Overview

### Form Definition Collection



### Transaction Processing



## Installed Web Sphere Components

### Enterprise Applications

- KKFilter
- KKFilterConfiguration

### Service Bus

- KKFilterBus

### JMS Connection Factory

- KKQConnectionFactory

### JMS Queues

- KKQueue
- KKSettings

### JMS Activation Specification

- KKJMSActivationSpec

### Shared Library

- KKSharedLib

## Kinsey WebSphere Global Configuration

### URL – Using default Virtual Host

- [http://\[WEBSPHERE\\_DEPLOYMENT\\_MANAGER\\_SERVER\]:9080/KKFilterConfigurationWEB](http://[WEBSPHERE_DEPLOYMENT_MANAGER_SERVER]:9080/KKFilterConfigurationWEB)

*\* WEBSPHERE\_DEPLOYMENT\_MANAGER\_SERVER is typically the WebSphere Admin Console URL*

## Configuration Screen

**Java Messaging Queue Messages**

Settings	160
Local Transactions	0
Remote Queue	5

**Application**

Application	App Server	Status
BPM	server2_Node01 server1_Node01	●
DefaultApplication		●
IOS	server2_Node01 server1_Node01	●
IOS-cluster		●
KKFilter	server2_Node01 server1_Node01	●
KKFilterConfiguration	server2_Node01 server1_Node01	●
LawsonSecurity	server2_Node01 server1_Node01	●
OTIS	dmgr	●
WebSphereWSDM		●
commsvc		●
ibmasyncrsp	server2_Node01 server1_Node01	●
isclite	dmgr	●
ivtApp		●
query		●

**Selectable WebSphere Scopes**

[(cell):ls10serverCell01:(cluster):KKCluster]

Integration Bus

JMS Resources

Shared Library

JDBC Connections

**System Settings**

Log Level

Debug

Serial #

Active MQ Port

Active MQ Server

AMQ Extra Properties

Customer ID

**All Stored Settings**

Field mask sets 28 forms

Function code sets 21 forms

Form types 28 forms

Field sets 28 forms

Key sets 46 forms

1. Java Messaging Queue Messages
  - **Settings** - number of JMS messages in WebSphere that have settings (system and Lawson)
  - **Local Transactions** – current Lawson transactions in WebSphere waiting to be sent to Active MQ
  - **Remote Queue** – current Lawson transactions in Active MQ waiting to be processed in database
2. Enterprise Application Status
  - WebSphere application status (running or not) across the WebSphere environment
3. WebSphere Resource Status
  - **WebSphere Scope selection** – Server, Cluster, etc
  - **Integration Bus** – Add or delete the KKFilterBus
  - **JMS Resources** – Add or delete the JMS items: connection factory, queues, activation specification
  - **Shared Library** – Add or delete the KKSharedLib library
  - **JDBC Connections** – (not used at this time)
4. Kinsey System Settings
  - **Log Level** – values are (0=least verbose) to (9=most verbose)
  - **Debug** – if TRUE=show all log messages, regardless of Log Level
  - **Serial #** - Customer serial number (Kinsey provided)
  - **Active MQ Port** – Active MQ Port (typically 61617 – SSL encrypted port)
  - **Active MQ Server** – Active MQ Server (typically Kinsey virtual server name/ip address)
  - **AMQ Extra Properties** – extra connection properties for Active MQ URL connection
  - **Customer ID** – Customer id number (Kinsey provided)
5. Stored Settings – all forms, function codes defined

## Activating Kinsey Transaction Auditing/Activity Monitor (Listener)

If you want to re-enable (or disable) in the future...the process has gotten much easier:

1. Open **WebSphere Admin Console**
2. Open **Enterprise Applications**
3. Open **IOS** application
4. Click the **Shared Library References**
5. Check **IOS.war**
6. Click **Reference shared libraries**
7. Select **KKSharedLib** (and slide it *RIGHT* to enable)
8. Hit **Ok**
9. Hit **Ok**
10. **Save configuration**

Sync nodes:

11. Open **System Administration** (back on WebSphere *main menu*)
12. Open **Save** changes to master repository
13. Check box to **Synchronize changes with nodes**
14. Click **Save**
15. **Stop IOS** application
16. **Start IOS** application

**\*\*AT THIS POINT THE LISTENER/AUDITOR WILL BE ACTIVE\*\***



## Deactivating the Kinsey Transaction Auditing/Activity Monitor (Listener)

If you want to re-enable (or disable) in the future...the process has gotten much easier:

1. Open **WebSphere Admin Console**
2. Open **Enterprise Applications**
3. Open **IOS** application
4. Click the **Shared Library References**
5. Check **IOS.war**
6. Click **Reference shared libraries**
7. Select **KKSharedLib** (and slide it *LEFT* to disable)
8. Hit **Ok**
9. **Save configuration**

Sync nodes:

10. Open **System Administration** (back on WebSphere *main menu*)
11. Open **Save** changes to master repository
12. Check box to **Synchronize changes with nodes**
13. Click **Save**
14. **Stop IOS** application
15. **Start IOS** application

**\*\*AT THIS POINT THE TRANSACTION AUDITING/ACTIVITY MONITOR (LISTENER) WILL BE DEACTIVATED\*\***

## Contacts

Dan Kinsey  
President  
Office: 630.858.4866  
Email: [d.kinsey@kinsey.com](mailto:d.kinsey@kinsey.com)

Mike Nitka  
Tech Consultant  
Office: 630.858.4866  
Cell: 262.705.2102  
Email: [m.nitka@kinsey.com](mailto:m.nitka@kinsey.com)

Web Address: <http://www.kinsey.com>