



# Lawson S3 Security Dashboard

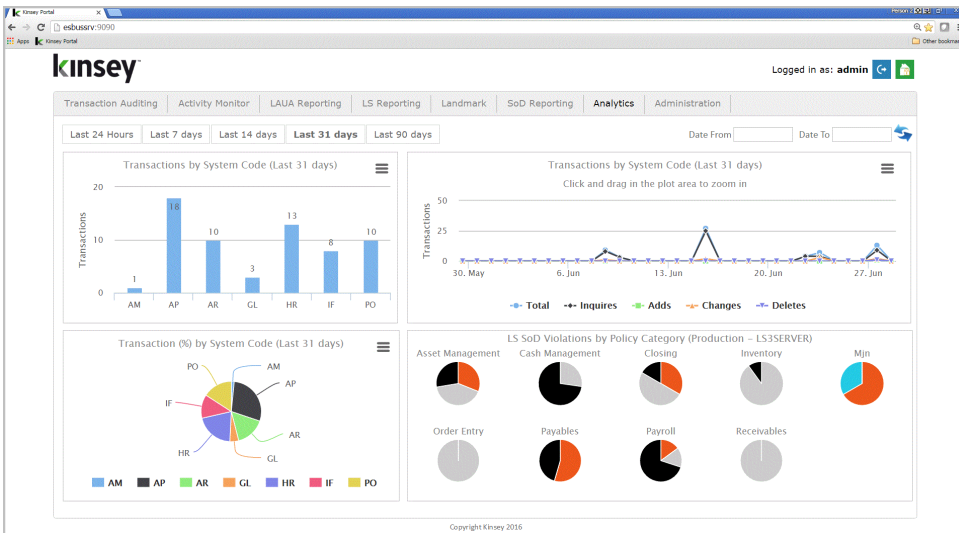
Complete Oversight into Lawson Security and User Activity

In the Cloud or On-premise



## Flexible and Easy to Implement

Kinsey's Security Dashboard provides another dimension to Infor Lawson's standard functionality. By providing a commonly accepted interface our application provides a simple and efficient way to review your security settings, validate Segregation of Duties policies, review security changes, track user activity or audit User transactions. Easily transform your queries into reports, schedule automatic email notifications, or simply export your results to Microsoft Excel. This fast and easy approach makes this an invaluable tool when evaluating Lawson security and auditing user activity.



## Key Benefits

Improved access to security setup, user activity, transaction history and SOD violations.

- User/Actor Security Reports
- Security Audit Reports
- Security Modeling
- User Activity Monitoring
- Segregation of Duties Reports
- SOD Remediation
- Transaction Audit Reports

In addition to the standard reports, Kinsey's Security Dashboard also provides the following options:

- Security Profile Comparisons
- Historical Security Reports
- Historical Security Audits
- Historical User Activity
- Historical Transaction Audits
- Email Notifications
- Report Favorites

## Target Audience

Security Administrators; Internal/ External Auditors; Department Managers

## Dashboard Product Suite

- Security Reporting
- Segregation of Duties Reporting
- Security Audit Reporting
- Security Modeling
- Activity Monitor
- Transaction Auditing

Dashboard metrics provide additional insight into potential SOD risk, User activity and Security changes.



## Key Features

<b>User Access Reports</b>	Create a variety of reports by User showing their current level of access. Standard reports include User-Role, User-Role-Security Class, User-Role-Security Class-Form, User Attributes, User Identities and User-Groups.
<b>Role and Security Class Reports</b>	Create a variety of reports for any Role or Security Class. Standard reports include Role-Security Class, Role-Security Class-Form-Rule, Security Class-Form-Rule, Role-Security Class All Objects, Security Class All Objects and Orphaned Objects.
<b>Historical Security Reports</b>	Create point in time snapshots of your security model and generate any standard report from the historical data.
<b>Historical Comparisons</b>	Using any historical snapshot compare your existing security settings to a specific point in time to see what changes have occurred.
<b>Security Audit Reports</b>	Track all changes made to your security model including who made the change, date and time stamp, object type and before and after security settings. Save and Schedule reports to send automatic email notification on critical changes.
<b>Security Modeling</b>	Create “what if” scenarios and measure the impact on any User for User Role changes, Role Security Class changes, Security Class Form changes or Form rule changes without actually making the change in Lawson Security. Once you see the impact on a User you can run the potential changes through your Segregation of Duties rule set to see if any potential changes may violate a policy.
<b>Activity Monitoring</b>	Track all user activity from the first transaction processed through the last. The application captures statistics and metadata on every Lawson S3 transaction processed including the User, Date, Time, Form Name, Record Keys and Function Code. Create, save and email custom reports by User, Form, Date or Key at anytime. Transactions are captured for every User action including inquiries.
<b>Segregation of Duties (SOD) Reporting</b>	The Segregation of Duties application helps you implement an appropriate level of checks and balances upon the activities of individuals within your organization. The application is installed with a library of 300 best practice policies using over 2,500 rules specifically built for Lawson by certified Lawson consultants. With the ability to add custom policies for Roles, Security Classes or Forms you have complete flexibility over your SOD Reports.
<b>Segregation of Duties (SOD) Remediation</b>	The SOD Remediation application is a great tool for testing various means of resolving User policy conflicts. The conflict grid highlights your most vulnerable violations based on actual User activity. Violated policies that contain forms that are never used pose the least risk while policies with active form usage may indicated a higher degree of vulnerability.
<b>Transaction Auditing</b>	Being able to create detailed, flexible audit logs from your enterprise applications can be an extremely powerful tool - one sometimes legally required for compliance. Every transaction in your enterprise is available for auditing through the Transaction Auditing application. Data-driven rules allow you to report on the transactions that are important to your enterprise. With the ability to set up any audit by User or form you can track the before and after value of any field change in Lawson. Transaction Auditor provides the utmost in flexibility to meet your enterprise auditing needs.

### About Kinsey

Since 1983, Kinsey has been providing clients a broad range of expertise in the areas of financials, procurement, human resources, payroll, budgeting, planning, distribution and manufacturing. Our custom security and auditing solutions have helped numerous Infor/Lawson customers satisfy their audit requirements. For more information about Kinsey please visit the company website at [www.kinsey.com](http://www.kinsey.com).